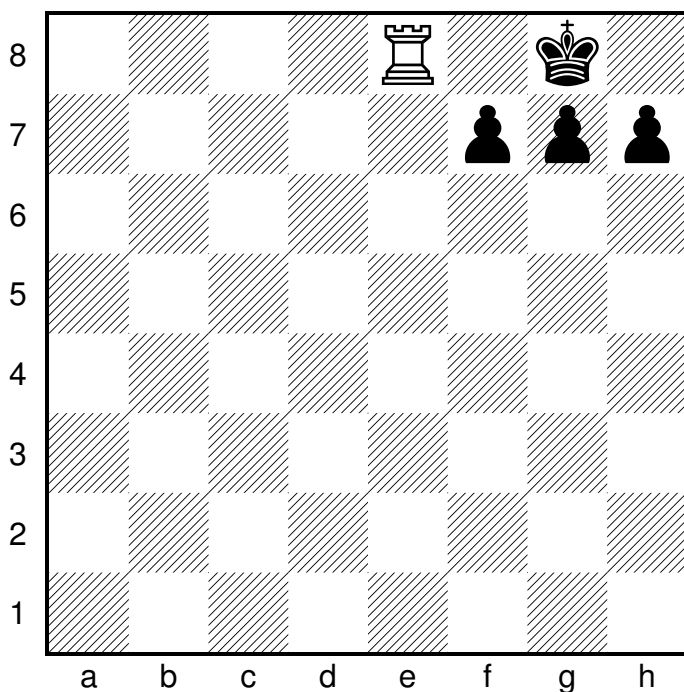
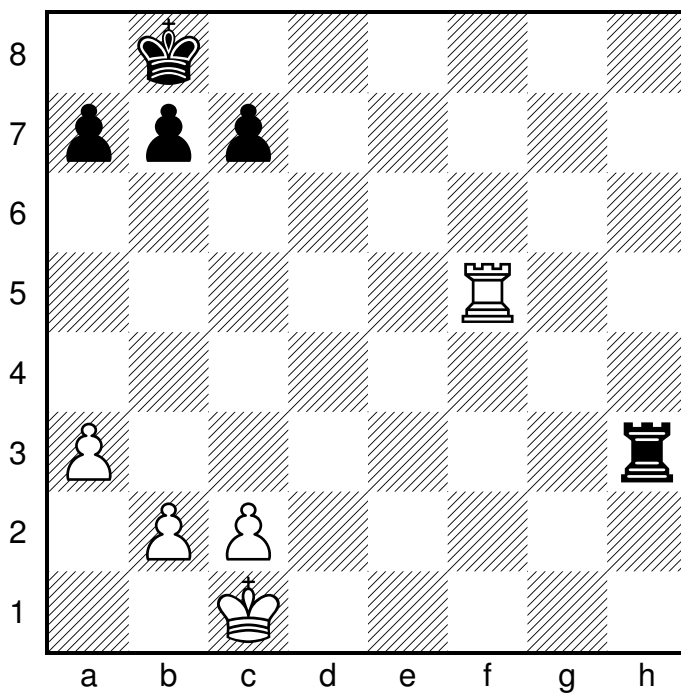
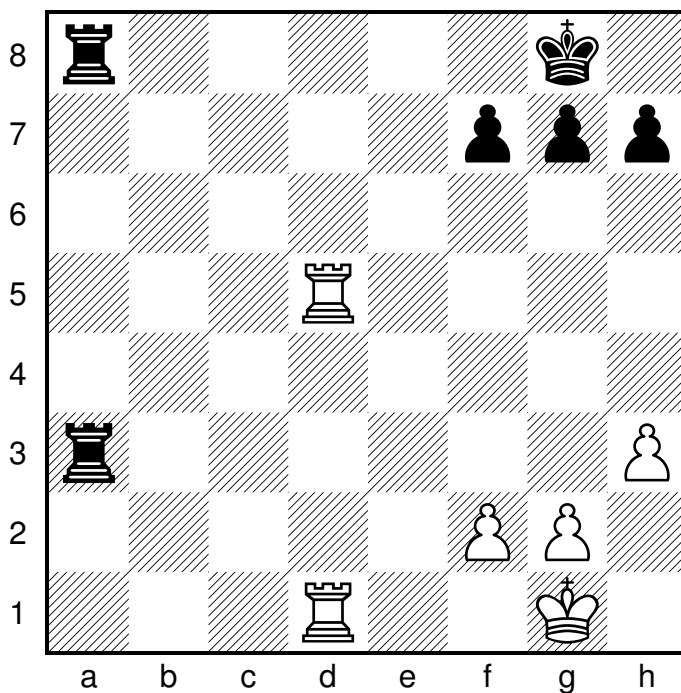


## Matt på sista raden (plaskmatt)



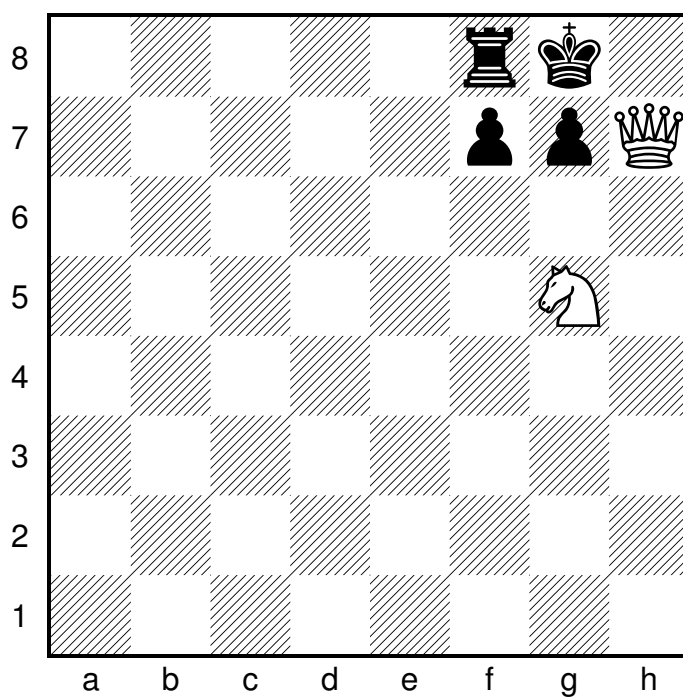


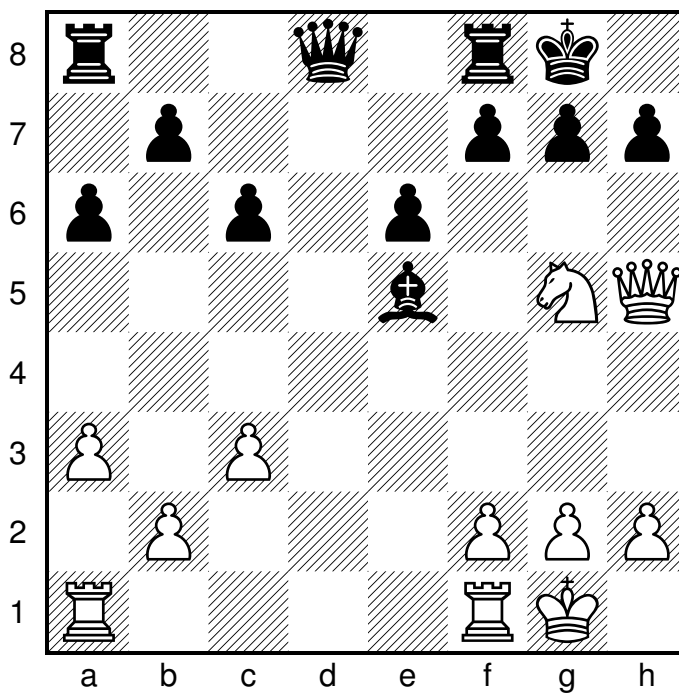
	Vit	Svart
1		



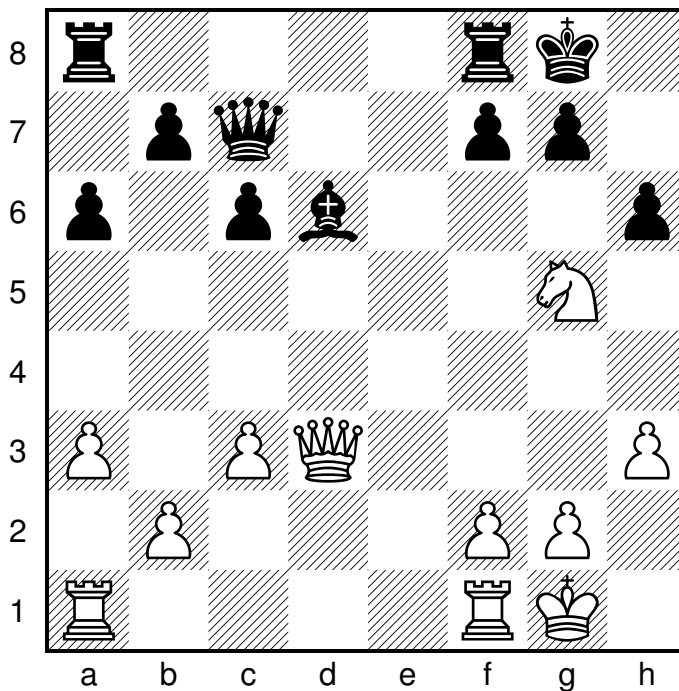
	Vit	Svart
1		
2		

## Dam och springarmatt



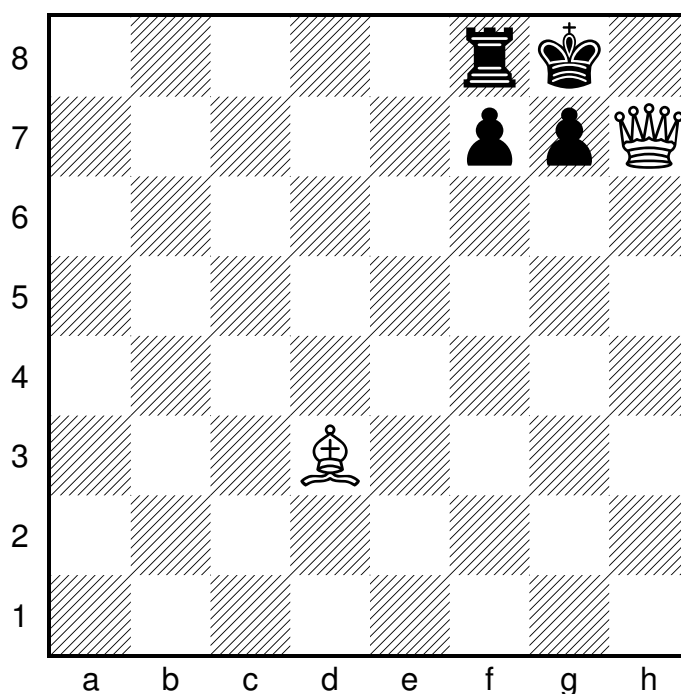


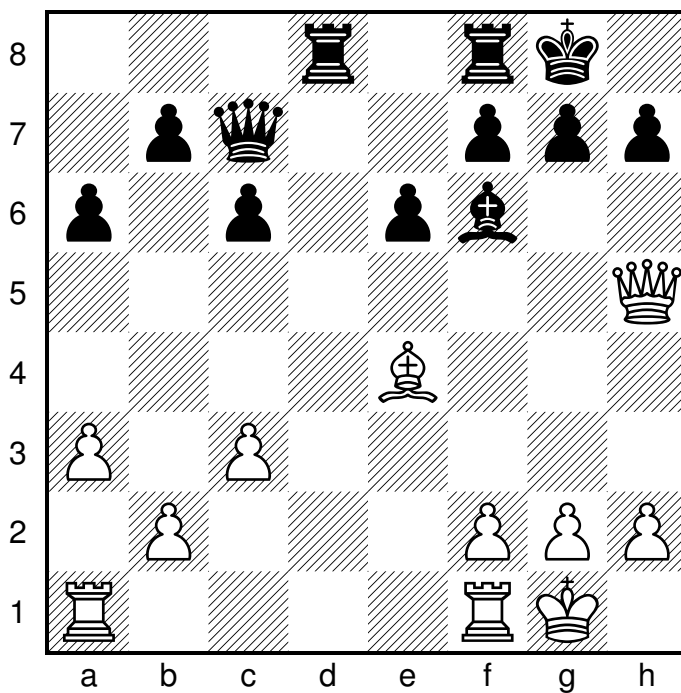
	Vit	Svart
1		



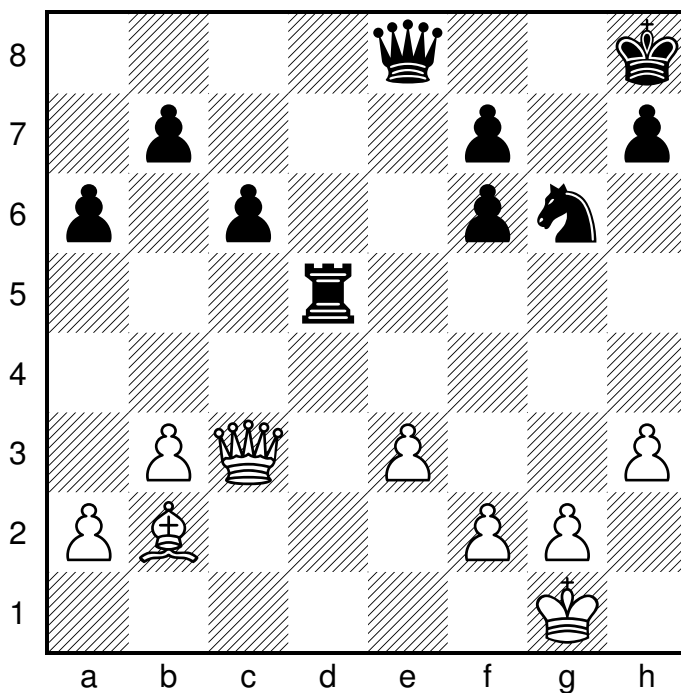
	Vit	Svart
1		

## Dam och löparmatt



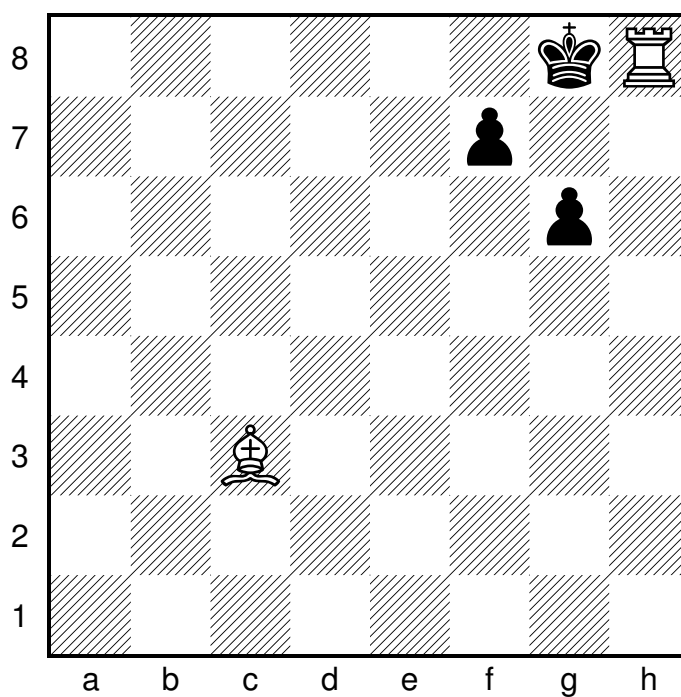


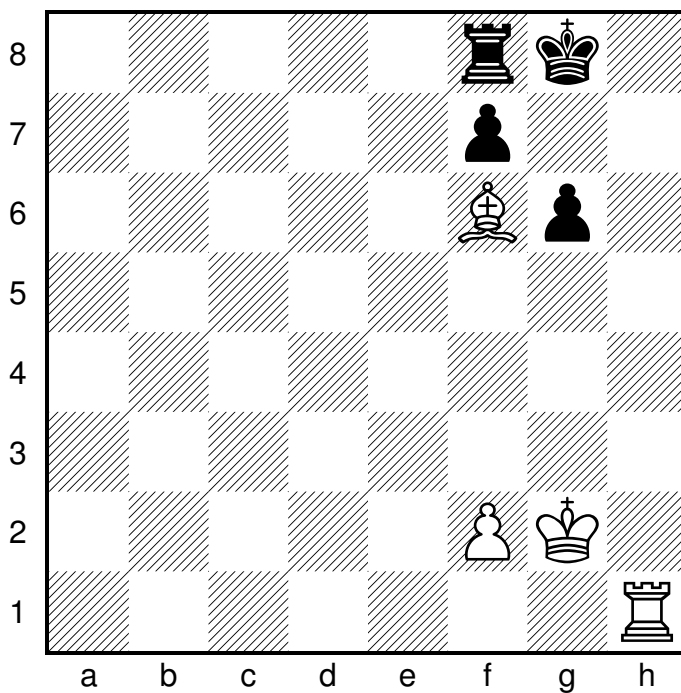
	Vit	Svart
1		



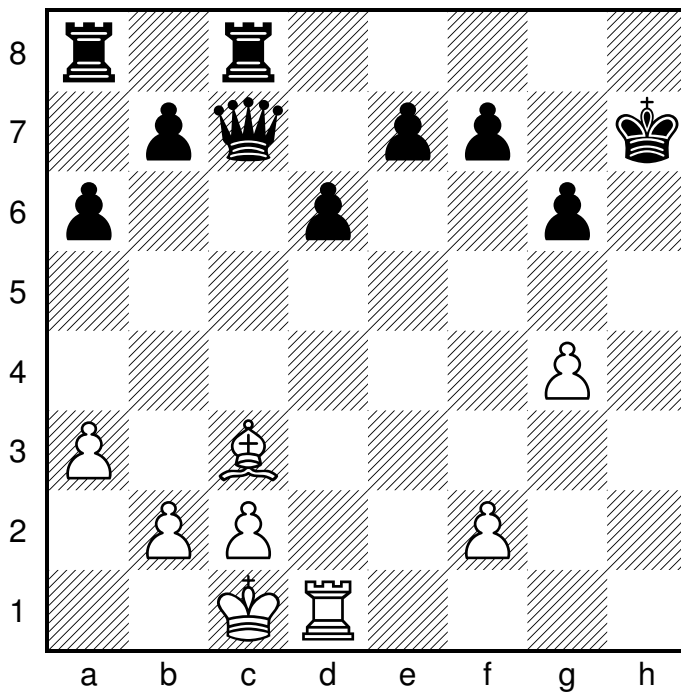
	Vit	Svart
1		
2		

## Torn och löparmatt





	Vit	Svart
1		



	Vit	Svart
1		
2		



Vit gör matt i 1 eller 2 drag.  
Rita eller skriv dragen!

1)

	Vit	Svart
1		
2		

2)

	Vit	Svart
1		

3)

	Vit	Svart
1		

4)

	Vit	Svart
1		
2		

Vit gör matt i 2 eller 3 drag.  
Rita eller skriv dragen!

5)

	Vit	Svart
1		
2		

6)

	Vit	Svart
1		
2		

7)

	Vit	Svart
1		
2		

8)

	Vit	Svart
1		
2		
3		